

Anti-H_TROP2 hIgG1 Antibody(Datopotamab)

Product Information

GM-26561AB-10	10 µg
GM-26561AB-100	100 µg
GM-26561AB-1000	1 mg

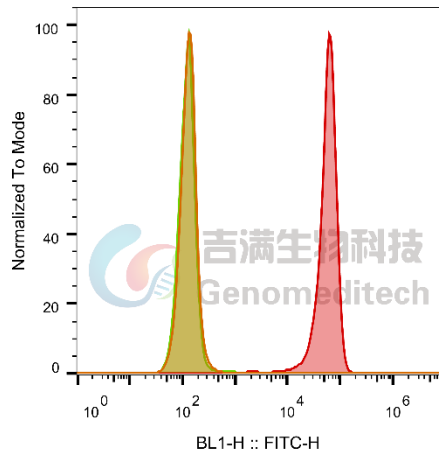
Antibody Information

Species Reactivity	Human; Cynomolgus
Clone	Datopotamab
Source/Isotype	Monoclonal human IgG1, κ
Application	Flow cytometry; Bioactivity-ELISA
Specificity	Detects TROP2.
Gene	TROP2
Other Names	EGP-1, EGP1, GA733-1, GA7331, GP50, M1S1, TACSTD2
Gene ID	4070(human); 102127436(cynomolgus)
Background	TROP2 is a carcinoma-associated antigen defined by the monoclonal antibody GA733. This antigen is a member of a family including at least two type I membrane proteins. It transduces an intracellular calcium signal and acts as a cell surface receptor. Mutations of this gene result in gelatinous drop-like corneal dystrophy, an autosomal recessive disorder characterized by severe corneal amyloidosis leading to blindness.
Storage	Store at 2-8°C short term (1-2 weeks).Store at ≤ -20°C long term.Avoid repeated freeze-thaw.
Formulation	Phosphate-buffered solution, pH 7.2.
Endotoxin	< 1 EU/mg, determined by LAL gel clotting assay

Data Examples

Flow cytometry

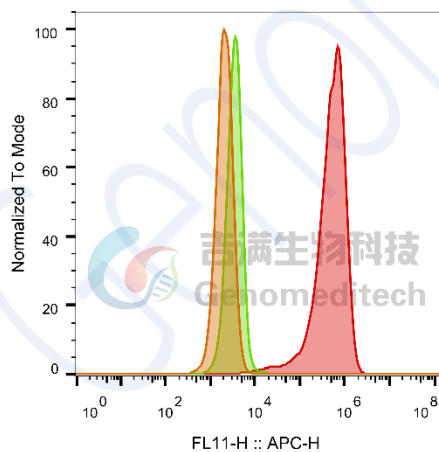
The recommended usage range is 0.5-4 μ g per test. H_TROP2 CHO-K1 Cell Line (Catalog # GM-C12880) was stained with Anti-H_TROP2 hlgG1 Antibody (Catalog # GM-26561AB) or isotype control antibody, followed by anti-Human IgG FITC-conjugated Secondary Antibody.



SampleID	Geometric Mean : BL1-H
CHO-K1 anti-H_TROP2+FITC-2nd Ab	134
CHO-K1 H_TROP2 H_IgG+FITC-2nd Ab	127
CHO-K1 H_TROP2 anti-H_TROP2+FITC-2nd Ab	54297

Flow cytometry

The recommended usage range is 0.5-4 μ g per test. Cynomolgus_TROP2 CHO-K1 Cell Line (Catalog # GM-C27593) was stained with Anti-H_TROP2 hlgG1 Antibody (Catalog # GM-26561AB) or isotype control antibody, followed by anti-Human IgG APC-conjugated Secondary Antibody.



SampleID	Geometric Mean : FL11-H
CHO-K1 anti-TROP2+APC-2nd Ab	2099
CHO-K1 Cyno_TROP2 H_IgG+APC-2nd Ab	3511
CHO-K1 Cyno_TROP2 anti-TROP2+APC-2nd Ab	4.64E5

Fig. FACS

Bioactivity-ELISA

Biotinylated Human TROP2 Protein; His-Avi Tag (Catalog # GM-87610RP) was immobilized at 1 µg/ml (100 µL/well) on streptavidin precoated. Increasing concentrations of Anti-H_TROP2 hIgG1 Antibody (Datopotamab) (Catalog # GM-26561AB) were added.

Bioactivity-ELISA
0.1 µg Biotinylated Human TROP2 Protein; His-Avi Tag of per well

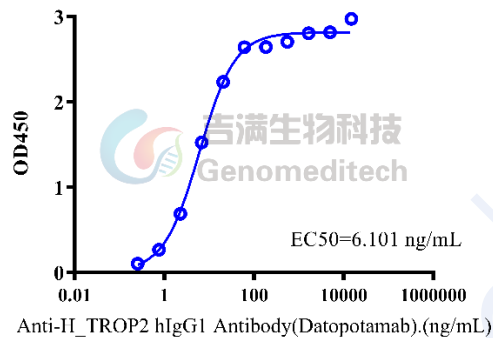


Fig. Assay

Bioactivity-ELISA

Biotinylated Cynomolgus TROP2 Protein; His-Avi Tag (Catalog # GM-87613RP) was immobilized at 1 µg/ml (100 µL/well) on streptavidin precoated. Increasing concentrations of Anti-H_TROP2 hIgG1 Antibody (Datopotamab) (Catalog # GM-26561AB) were added.

Bioactivity-ELISA
0.1 µg Biotinylated Cynomolgus TROP2 Protein; His-Avi Tag of per well

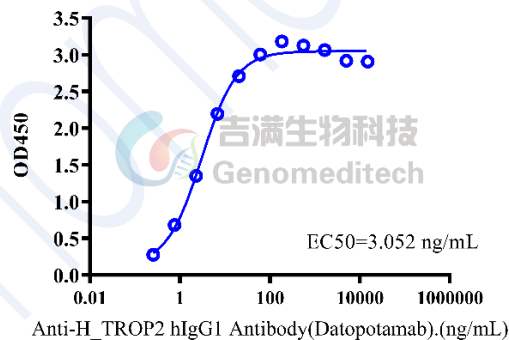


Fig. Assay